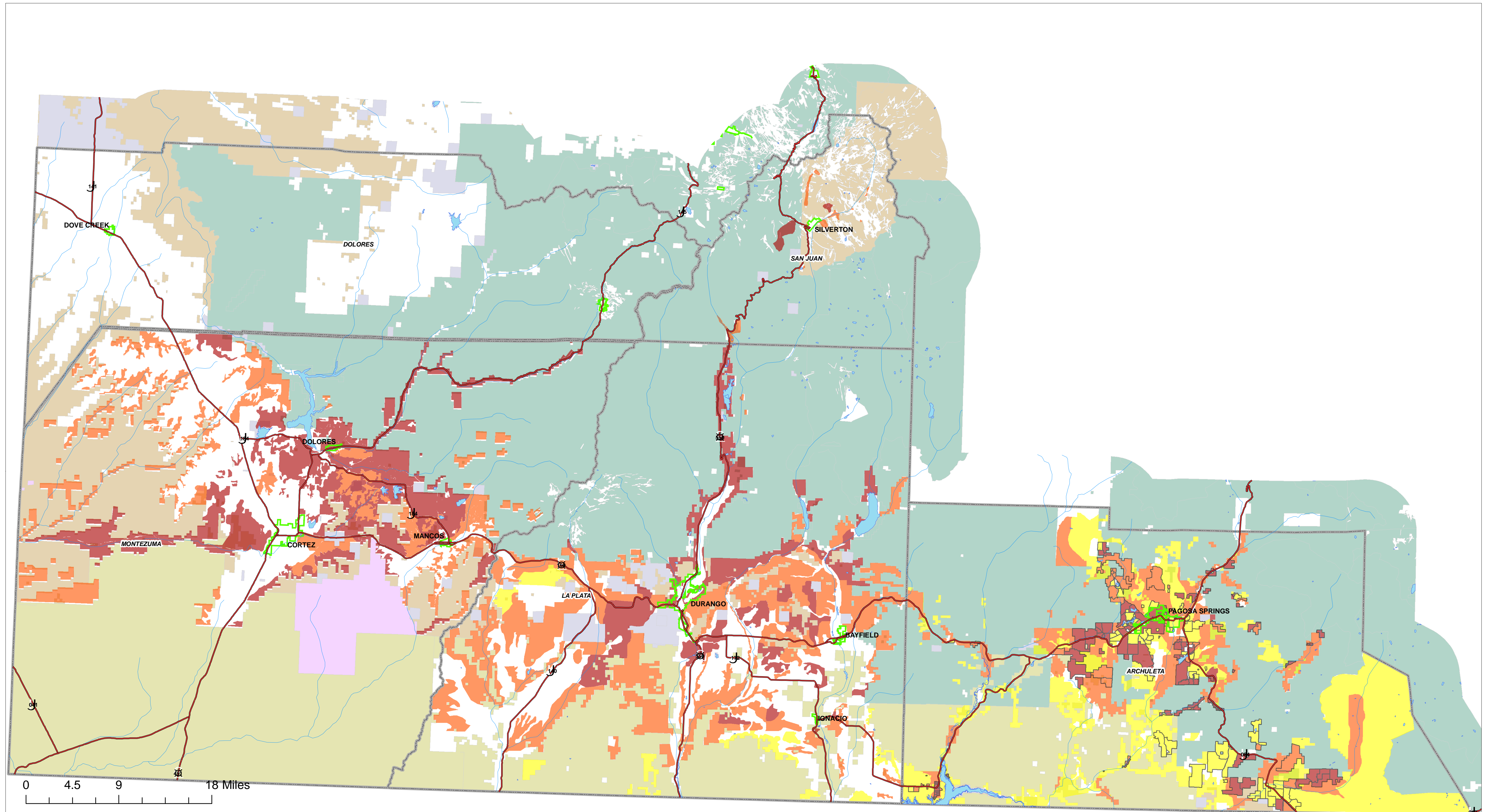


Region 9 Wildfire Preparedness Initiative

Fire Risk Zones

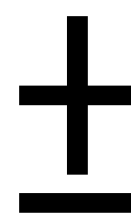


Public Lands

- USFS
- COLORADO
- BLM
- BIA
- NPS

Level Of Concern

- Higher
- Moderate
- Lower



This map illustrates the relative fire risk in populated areas throughout the 5 counties of Region 9 (currently excluding Dolores County), Colorado by encapsulating fire-prone zones in colored polygons. Relative risk assessments were based on several factors. Vegetation type and its potential as fuel were determined by using high resolution aerial photography. Topography was utilized by conducting slope and aspect analysis on 30 meter Digital Elevation Models (DEMs) from the USGS. Other factors include emergency access, proximity to water and proximity to potential fuels on adjacent public lands.

The fire risk polygons have been reviewed and revised by the fire chiefs or their designated deputies from the various fire protection districts or departments.

The polygons should be used as guidelines, since none of them are completely homogeneous in terms of vegetation type and density, and topography. It is possible that many of the polygons could contain relatively safe zones. In these situations we err on the side of caution and make an assessment based on the overall average risk of the zone.

Data Sources, Projection & Scale: Color 1/3 meter aerial photography was obtained from La Plata County. DOQQs (1 meter) and 30 meter DEMs were obtained from the USGS. Color 1 meter aerial photography used for Archuleta County was obtained from the National Agricultural Imagery Program (NAIP) The land ownership, stream, lake, highway and county boundary data is from CDOT. The map projection is UTM Zone 13 NAD 1983. The scale is 1:300,000. Created by Fort Lewis College, Office of Community Services, 7/5/06.